

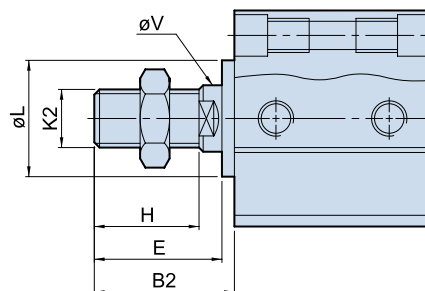
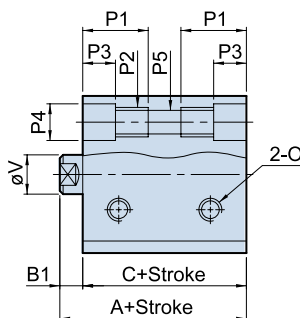
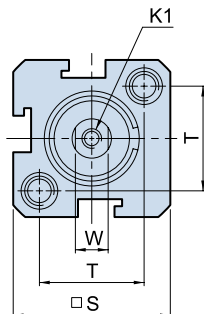
AJC 空壓治具缸 SD. SDM



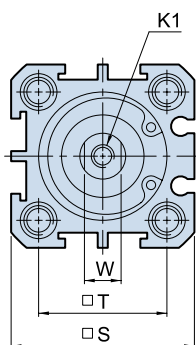
Air Jig Cylinder SD. SDM

• Bore: $\phi 12$ - $\phi 100$ mm • Pmax: 10kg/cm²

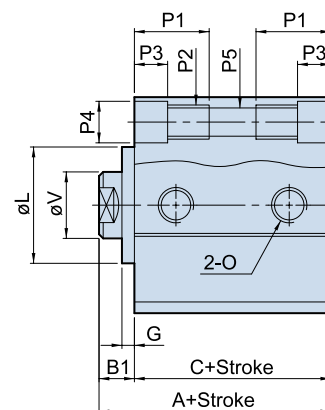
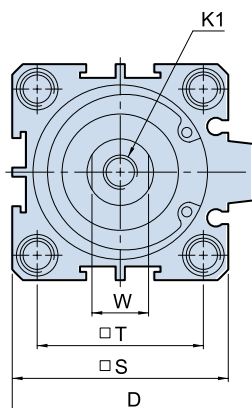
Bore $\phi 12$ - $\phi 16$



Bore $\phi 20$ - $\phi 25$



Bore $\phi 32$ - $\phi 100$



Dimensional table

UNIT:mm

Bore	AJC-SD		AJC-SDM		B1	B2	D	E	G	H	K1 内牙 Int. thread K1
	A	C	A	C							
$\phi 12$	25	20.5	35	30.5	4.5	14.5	—	14.5	—	10	M3x0.5x7D.
$\phi 16$	26	21.5	36	31.5	4.5	14.5	—	14.5	—	10	M3x0.5x7D.
$\phi 20$	25	19.5	35	29.5	5.5	19.5	—	18	1.5	14	M4x0.7x10D.
$\phi 25$	27	21	37	31	6	22	—	20	2	16	M5 x 0.8 x 10D.
$\phi 32$	31.3	24	41.3	34	7.3	24.3	50	21	3.3	17	M6x1.0x14D.
$\phi 40$	33.8	26.5	43.8	36.5	7.3	34.3	58	31	3.3	27	M8x1.25x14D.
$\phi 50$	37.6	28.6	47.6	38.6	9	36	71	32	4	27	M10x1.5 x 15D.
$\phi 63$	41.5	32.5	51.5	42.5	9	36	84.5	32	4	27	M10x1.5 x 15D.
$\phi 80$	52.3	41.3	62.3	51.3	11	44	104	39	5	33	M14x1.5x20D.
$\phi 100$	53.8	45.3	63.8	55.3	8.5	41.5	124	38.5	3	33	M16x2.0x20D.

Bore	K2 外牙 Ext. thread K2	L	O	P1	P2	P3	P4	P5	S	T	V	W
$\phi 12$	M5 x 0.8	—	M5 x 0.8	10.5	M5 x 0.8	4.5	$\phi 6.5$	$\phi 4.3$	25	15.7	6	5
$\phi 16$	M5 x 0.8	—	M5 x 0.8	10.5	M5 x 0.8	4.5	$\phi 6.5$	$\phi 4.3$	29	19.8	6	5
$\phi 20$	M6 x 1.0	13	M5 x 0.8	11	M5 x 0.8	5	$\phi 6.5$	$\phi 4.3$	34	24	8	6
$\phi 25$	M8 x 1.25	17	M5 x 0.8	14	M6 x 1.0	6	$\phi 8$	$\phi 5.1$	40	28	10	8
$\phi 32$	M10 x 1.25	22	PT1/8	14	M6 x 1.0	6	$\phi 8$	$\phi 5.1$	44	34	12	10
$\phi 40$	M14 x 1.5	28	PT1/8	18	M8 x 1.25	8	$\phi 9.5$	$\phi 6.8$	52	40	16	14
$\phi 50$	M18 x 1.5	38	PT1/4	18.5	M8 x 1.25	8.5	$\phi 11$	$\phi 6.8$	62	48	20	17
$\phi 63$	M18 x 1.5	40	PT1/4	18.5	M8 x 1.25	8.5	$\phi 11$	$\phi 6.8$	75	60	20	17
$\phi 80$	M22 x 1.5	45	PT3/8	22.5	M12 x 1.75	10.5	$\phi 14$	$\phi 10.5$	94	74	25	22
$\phi 100$	M22 x 1.5	45	PT3/8	28	M14 x 2.0	13	$\phi 18.5$	$\phi 12.3$	114	90	25	22