

# LSV 油壓順序閥



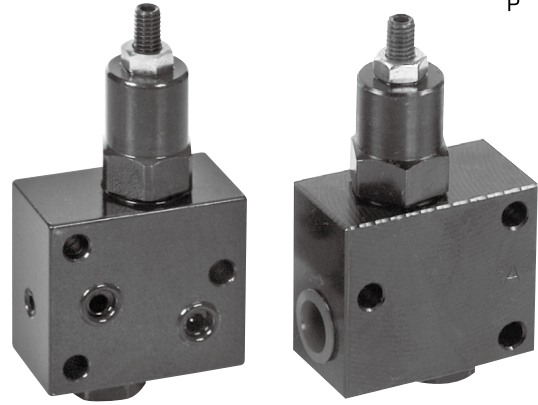
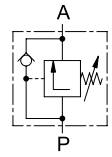
## Hydraulic Sequence Valve

### 產品簡介

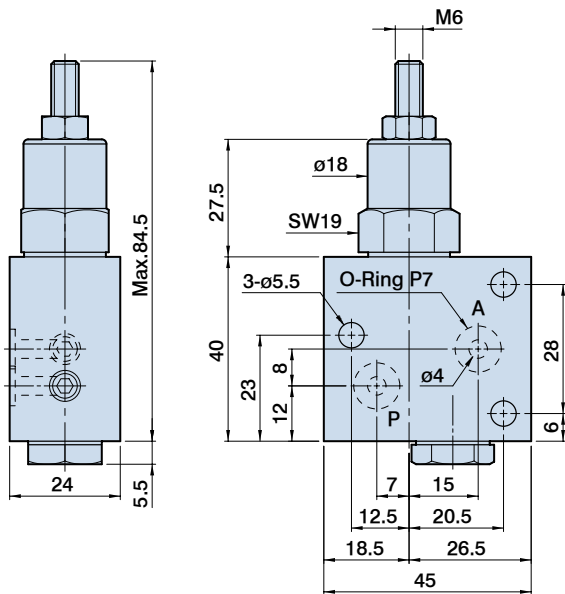
- 此型式油壓順序閥，特別適用於夾具迴路，由壓力決定油壓缸之順序動作，體積小，耐壓力，安裝於迴路中，不需其他控制，即可得到順序動作確實之效果。
- 本產品提供A: 油路板型, B: 配管型兩種型式，可依夾具整體設計安裝方式需要作適當選擇。

### Product Introduction

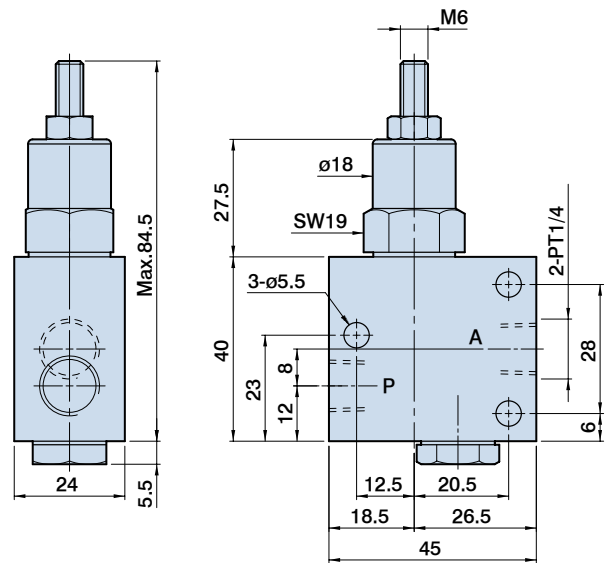
- The series of hydraulic sequence valve is especially ideal for fitting on the circuit of fixture. The hydraulic cylinder motion sequences are decided by the pressure. The sequence valve features compact construction and high pressure resistance. It requires no further control when fitting on the circuit, and provides a positive sequential motion control.
- The series provides two types of mounting type for choice. A type is a manifold mounting type and B type is a line mounting type. You get a flexible choice of mounting types to suit your fixture design.



LSV-A



LSV-B

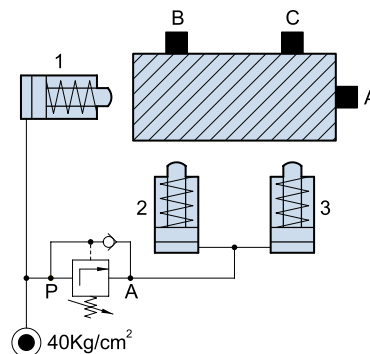


### 型式與壓力調整範圍

#### Type and Pressure Range

油路板型 Manifold type	配管式 Line type	壓力調整範圍 Pressure Range
LSV-A	LSV-B	10-70Kg/cm <sup>2</sup>

### 迴路圖 Circuit diagram



油壓缸1 將工件推向A. 壓力達到 LSV設定40kg/cm<sup>2</sup>。

油壓缸2,3同時將工件推向B,C, 獲得順序夾持動作。

The hydraulic cylinder I pushes workpiece to A. The pressure reaches to the setting value 40kg/cm<sup>2</sup> on LSV.

The hydraulic cylinders 2 and 3 push workpiece to B and C to provide sequential clamping motion.

# HSV 油壓順序閥



## Hydraulic Sequence Valve

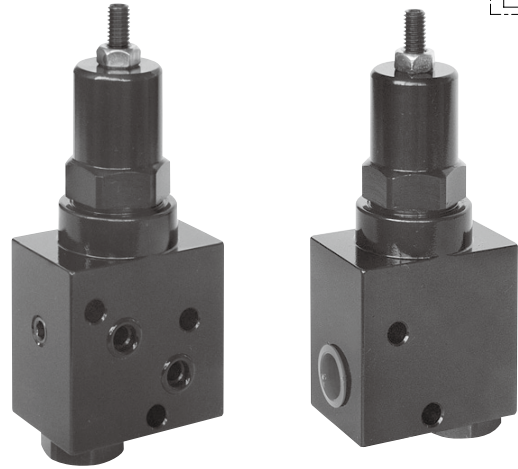
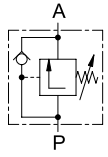
◎ 本產品已取得專利，請同業切勿仿冒

### 產品簡介

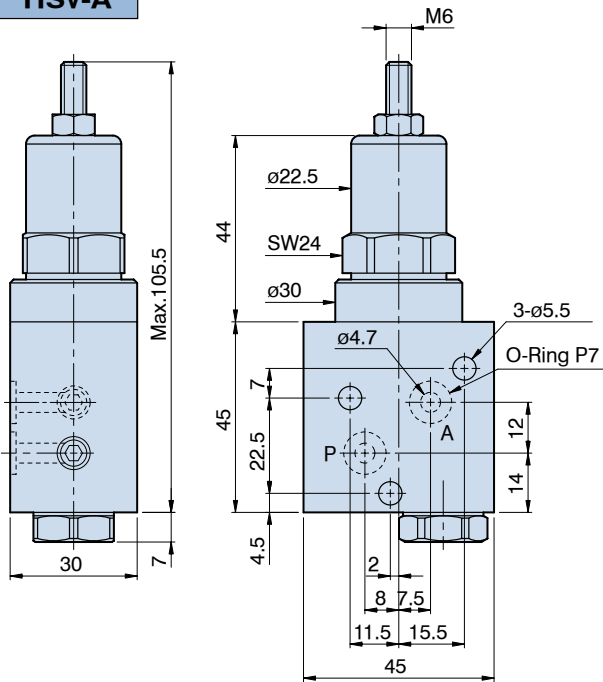
- 此型式油壓順序閥，特別適用於夾具迴路，由壓力決定油壓缸之順序動作，體積小，耐壓力，安裝於迴路中，不需其他控制，即可得到順序動作確實之效果。
- 本產品提供A:油路板型B:配管型兩種型式，可依夾具整體設計安裝方式需要作適當選擇。

### Product Introduction

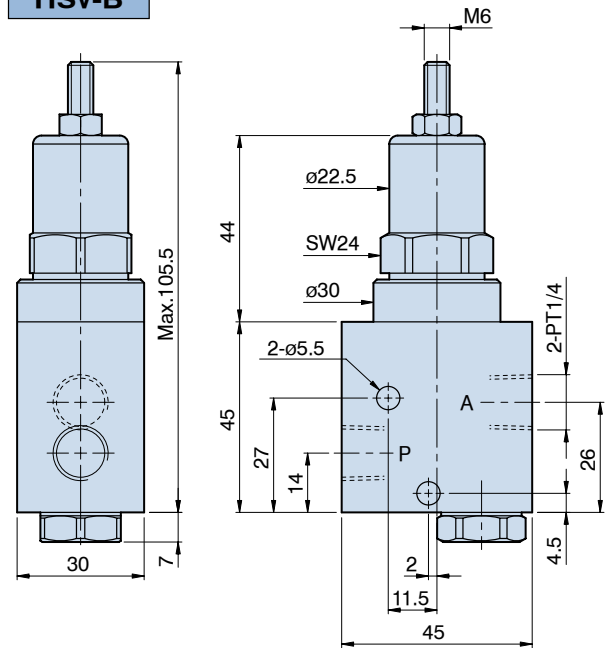
- The series of hydraulic sequence valve is especially ideal for fitting on the circuit of fixture. The hydraulic cylinder motion sequences are decided by the pressure. The sequence valve features compact construction and high pressure resistance. It requires no further control when fitting on the circuit, and provides a positive sequential motion control.
- The series provides two types of mounting type for choice. A type is a manifold mounting type and B type is a line mounting type. You get a flexible choice of mounting types to suit your fixture design.



HSV-A



HSV-B

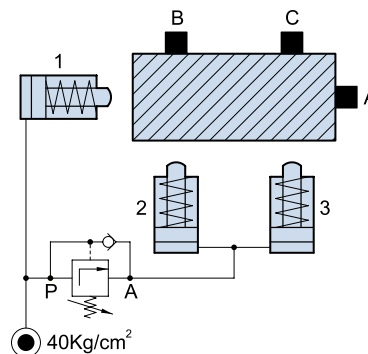


### 型式與壓力調整範圍

#### Type and Pressure Range

油路板型 Manifold type	配管式 Line type	壓力調整範圍 Pressure Range
HSV-A1	HSV-B1	10-50Kg/cm <sup>2</sup>
HSV-A2	HSV-B2	30-200Kg/cm <sup>2</sup>
HSV-A3	HSV-B3	70-300Kg/cm <sup>2</sup>

### 迴路圖 Circuit diagram



油壓缸1將工件推向A。壓力達到HSV設定40kg/cm<sup>2</sup>。  
油壓缸2,3同時將工件推向B,C，獲得順序夾持動作。

The hydraulic cylinder I pushes workpiece to A. The pressure reaches the setting value 40kg/cm<sup>2</sup> on HSV.

The hydraulic cylinders 2 and 3 push workpiece to B and C to provide sequential clamping motion.