

HBC 塊型油壓缸

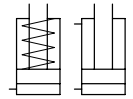


Hydraulic Block Cylinder

• Bore: $\phi 16$ - $\phi 40$ mm • Pmax: 500kg/cm²

產品簡介

- 本系列油壓缸為德規尺寸，採用進口油封保證耐壓，標準化規格，互換性高。
- 安裝型式為軸向、側向兩用型，作動方式分為單動常入型與複動式。



Product in production

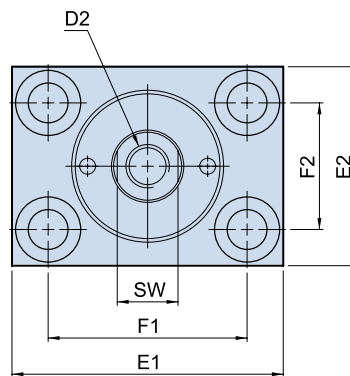
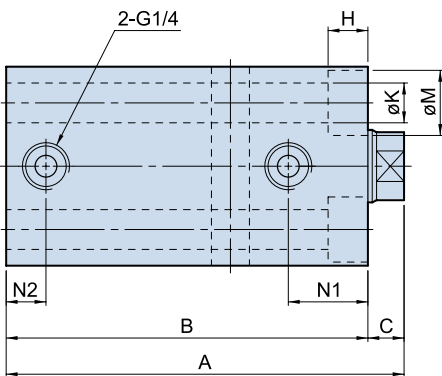
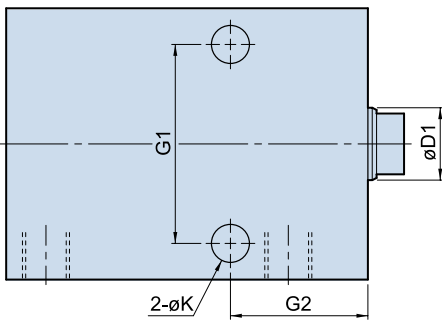
- The series of hydraulic cylinder complies with Germany specifications. Employ imported oil seal for outstanding pressure resistance. Standardized specifications and full interchangeability.
- Axial and side mounting type. Choice of single and double acting.



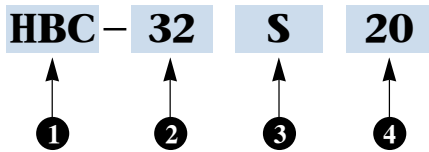
理論出力表 Clamping force

UNIT: Kg

油缸內徑 Bore of cylinder (mm)	活塞桿徑 Piston-rod (mm)	受壓面積 Pressure area(cm ²)		操作壓力 Operation pressure kg/cm ²			
		F1	F2	100		500	
$\phi 16$	$\phi 10$	2.01	1.22	201	122	1005	610
$\phi 25$	$\phi 16$	4.91	2.9	491	290	2455	1450
$\phi 32$	$\phi 20$	8.04	4.9	804	490	4020	2450
$\phi 40$	$\phi 25$	12.57	7.66	1257	766	6285	3830



訂購標示法 Order Code



①	系列別 Series	HBC	
②	油缸內徑 Bore of cylinder	$\phi 16$, $\phi 25$, $\phi 32$, $\phi 40$	
③	作動方式 Acting type	S	單動 Single-acting
		D	雙動 Double-acting
④	標準行程 Standard stroke	請參考尺寸表 Refer to the dimensional table	

Dimensional table

UNIT:mm

Bore	Single acting			Double acting			C	D1	D2	SW	E1	E2	F1	F2	G1	G2	H	K	M	N1	N2
	Stroke	A	B	Stroke	A	B															
$\phi 16$	8	62	56	16	62	56	6	10	M6x1.0 12 Deep	8	60	35	40	22	30	30	6.5	6.8	11	16.5	11
	20	97	91	50	97	91															
$\phi 25$	8	71	64	20	71	64	7	16	M10x1.5 15 Deep	13	65	45	50	30	50	33	9	9	14	18	11
	20	101	94	50	101	94															
$\phi 32$	10	85	75	25	85	75	10	20	M12x1.75 15 Deep	17	75	55	55	35	55	38	11	11	18	22	11
	20	110	100	50	110	100															
$\phi 40$	10	89	79	25	89	79	10	25	M16x2.0 25 Deep	21	85	63	63	40	63	40	11	11	18	24	11
	20	114	104	50	114	104															