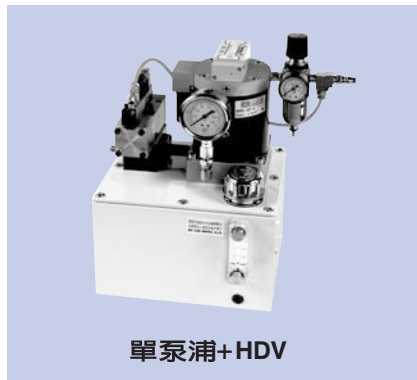
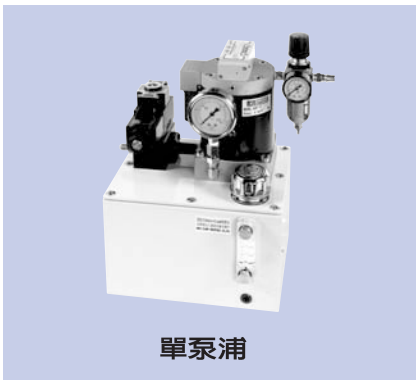


ABP 氣動增壓泵浦



Air Drive Booster Pump

• Pmax:6kg/cm²



產品簡介

- 利用空氣壓驅動增壓泵浦，輸出油壓壓力，作為油壓缸之動力源，流量大於一般增壓器，連續式增壓，作動缸無增壓行程之限制。
- 以空氣調壓閥調整壓力，達到增壓倍數即停止驅動，油壓降時，泵浦將會自動補償，特別適用於長時間油壓夾持，節省能源，不產生油溫，經濟方便。
- A型:安裝ISO規格油路板及電磁閥，適用於單動或複動油壓缸。
安裝HDV方向閥改善內洩量問題，保固氣動泵浦使用壽命。
- B型: 附配管座P.T孔，可連接油壓手動閥操作。
- 雙泵浦安裝組合可選購增壓比，特別適用於低壓與高壓同時使用之夾治具。
- 油箱體積小，節省空間，安裝容易。

Product Introduction

- The booster pump is driven by air to output hydraulic pressure for a power source for hydraulic cylinder. Its flow rate is bigger than that of a conventional booter. Continuous pressure boosting and no limitation of booster stroke for the acting cylinder.
- Pressure adjustment is made by an air pressure regulation valve. Once pressure reaches the desired value, drive stops immediately. In case pressure drops, the pump will compensate pressure automatically. The series is especially ideal for long time hydraulic clamping application. Also features energy saving, no oil temperature growth, economical and convenient.
- A Type: Equipped with ISO approved manifold and solenoid valve. Applicable for single-acting or double-acting hydraulic cylinder.
Equipped with HDV direction control valve to improve internal leakage problem and ensure the service life of air pump.
- B Type: Equipped with pipe block with P.T ports, permitting for connecting to a manual contort valve for operation control.
- When double-pump is applied, you can select the boost pressure ratio. It is especially suitable for jig and fixture which requires high and low pressure operation together.
- Reduced oil tank volume for space saving and convenient installation.

特性資料 Specification

使用流體	Fluid	已濾清之壓縮空氣 Filtered air				
最大操作壓力	Max operation pressure	6Kg/cm ²				
增壓倍數	Boost pressure rate	06	10	25	44	
空壓供給	Air pressure supply	5kg/cm ²				
油壓吐出量	Hydraulic fluid expelled	ℓ/min	16	10	5	3
油箱容量	Oil tank capacity	單泵浦 Single pump 5ℓ 雙泵浦 Double pump 7.8ℓ				
使用液壓油	Oil	ISO-VG68				

訂購標示法 Order Code

ABP - 10 A × AC110V

↑ ↑ ↑ ↑

① ② ③ ④

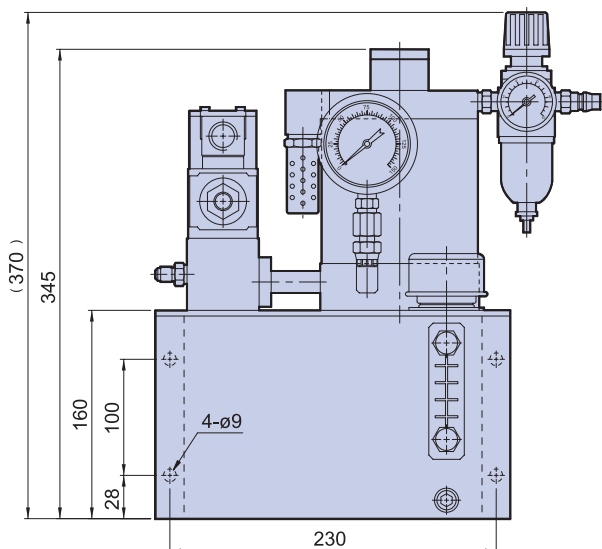
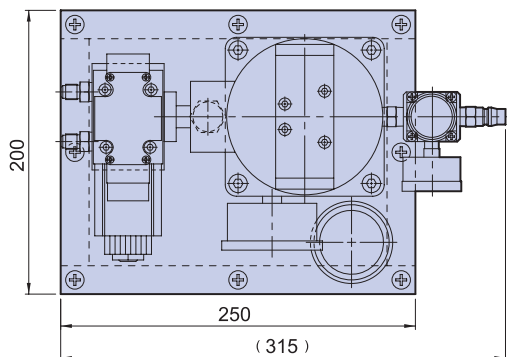
①	系列別 Series	ABP	
②	增壓倍數 Boost pressure rate	06 , 10 , 25 , 44	
③	控制型式 Control type	A	ISO 規格油路板 Manifold, magnet valve
		B	配管座P.T孔, Distributing tube seat P.T. port
④	線圈型式 Coil type	AC110V, AC220V, DC12V, DC24V	

ABP 氣動增壓泵浦

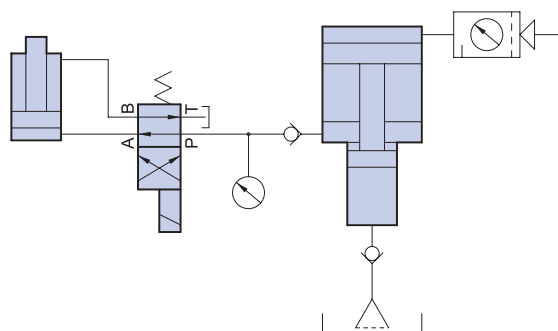


Air Drive Booster Pump

• Pmax:6kg/cm²



迴路圖 Circuit diagram



油箱尺寸 Specification

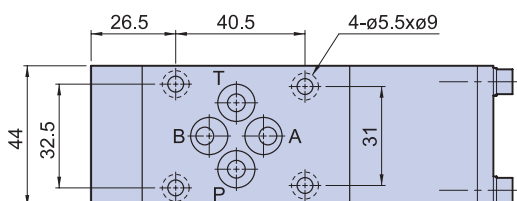
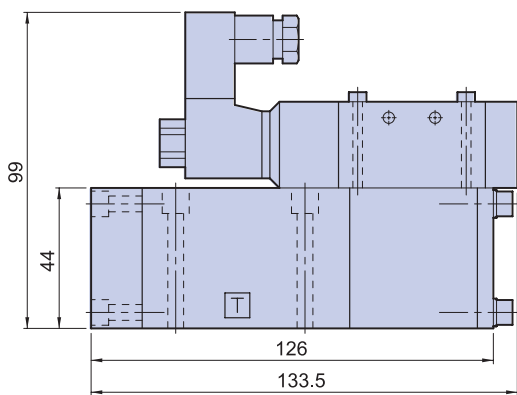
UNIT: mm

泵浦數量 Pump quantity	油箱外型尺寸 Dimension	背部及底部固定孔 Fixing hold at the back and bottom
單泵浦 Single pump	長(L)250×寬(W)200×高(H)160	230×100 ø9×4孔holes
雙泵浦 Double pump	長(L)300×寬(W)250×高(H)160	280×150 ø9×4孔holes

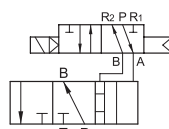
HDV 油壓方向閥 氣壓驅動

Hydraulic Directional Control Valve • Air Drive

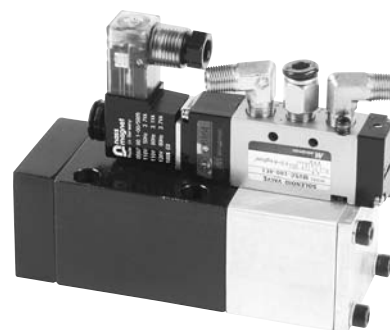
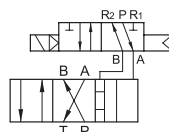
• Pmax:6kg/cm²



BG2W



BGA2W



訂購標示法 Order Code

HDV-400 BG2W × AC110V

①

②

③

④

①	系列別 Series	HDV	
②	閥體耐壓力 Pressure resist capacity	400kg/cm ²	
③	控制閥型式 Control type	BG2W	三口二位閥 Three ports two positions valve
		BGA2W	四口二位閥 Four ports two positions valve
④	線圈型式 Coil type	AC110V, AC220V, DC12V, DC24V	